

**W5 Series** are complete line of high performance flexible microwave cable assemblies. Specially, **W503** series have low loss **flexible** cable due to **stranded center conductor structure** and low density PTFE structure to achieve velocity propagation of **81 %**.

**W503** series have excellent RF performance up to 18 GHz with N-type Connectors & 26.5 GHz with SMA connectors, respectively.

## ■ Features

- Center Conductor : Silver Plated Copper
- Insulator : Low Density PTFE
- Inner Shield : Silver Plated Copper Tape
- Outer Shield : Silver Plated Copper Braid
- Jacket : Blue PUR

## ■ Specification



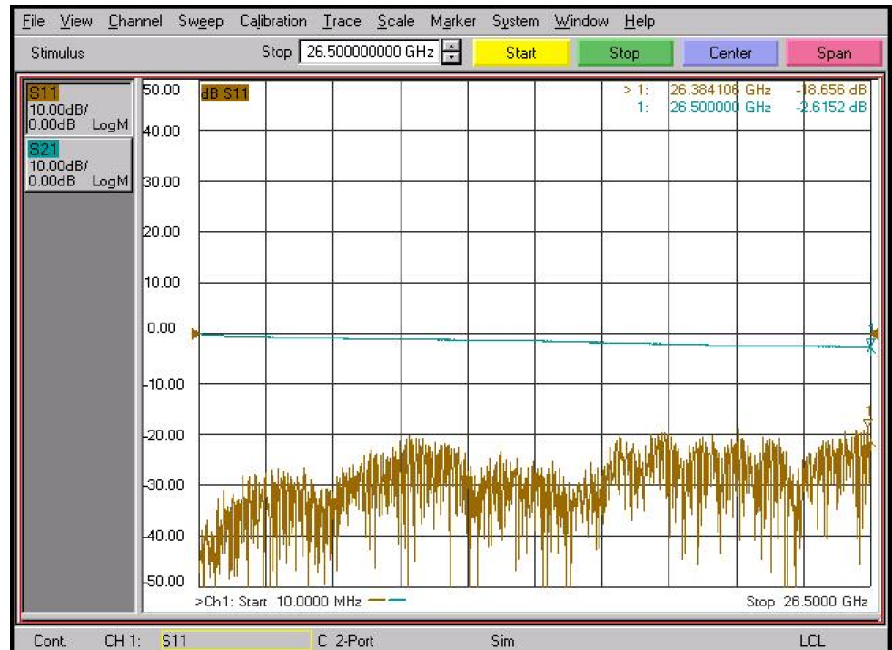
Scope	Specification	W503
Physical	Center Conductor (mm) : <b>Stranded type</b>	1.45
	Insulator (mm)	3.90
	Inner Shield (mm)	4.10
	Outer Shield (mm)	4.60
	Jacket	5.90
Electrical	Impedance	50 ± 1 Ohm
	Velocity of Propagation (%)	Typical 81
	VSWR (based on connector selection)	<1.3 to 18 GHz (N-type) < 1.2 to 26.5 GHz (SMA)
	Shielding Effectiveness	>90 dB
	Attenuation at 20 °C (Typical)	at 6.0 GHz 0.75 dB/m
		at 10.0 GHz 1.0 dB/m
		at 18.0 GHz 1.31 dB/m
		at 26.5 GHz 1.62 dB /m
Mechanical & Environmental	Weight (g/M)	63
	Min. bending radius	25
	Temperature (Storage)	-55 ~+85°C

## ■ Test Result

### W503 cable assembly

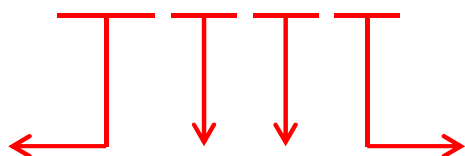
Part No. : W503-SM11SM1-1M

- Frequency : 10 MHz to 26.5 GHz
- Connector : SMA (Male)
- Cable Length : 1 meter



■ **Selection Guide**

**W503- SM1SM1 - 1M**



**Cable Type**

W503

**Connector Type**

SM1 : SMA Male  
NM1 : N-type Male

**Cable Length**

Unit : Meter

O.D : 5.9 mm

SMA



**W503(26.5G)**

