

**Withwave's terminations** are composed of broadband, due to the coaxial construction, it offers a excellent performance specified from DC to 18 GHz. Precision SMA coaxial connector interfaces ensure an good impedance match across wide bandwidth.



### ■ Features

- DC to 18 GHz
- VSWR : 1.20 : 1 (Max.)
- Power rating : 2 W @ 25~70 °C
- Temperature range : -55 ~ 100 °C

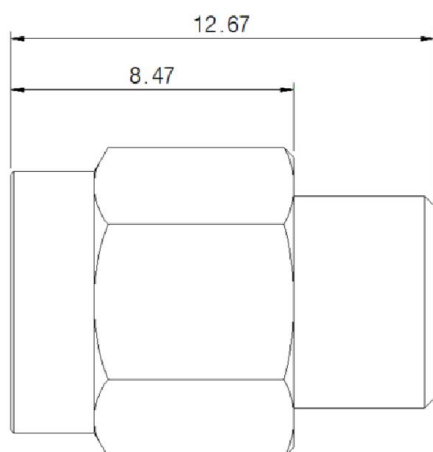
### ■ Specification

Scope	Specification	TM06-02-01A
Electrical	Impedance(Ohm)	50
	Freq. range (GHz)	DC to 18
	VSWR	1.20 : 1 (Max)
	Power rating	2 W @ 25~70 °C
	Dielectric	PTFE
Material	Center Contact	Brass with gold plated
	Body & Connector	Brass with gold plated

### ■ Drawing

**Part No. : TM06-02-01A**

Unit : mm



### ■ Measurement result



▪ Freq. range : 10 MHz to 18 GHz